

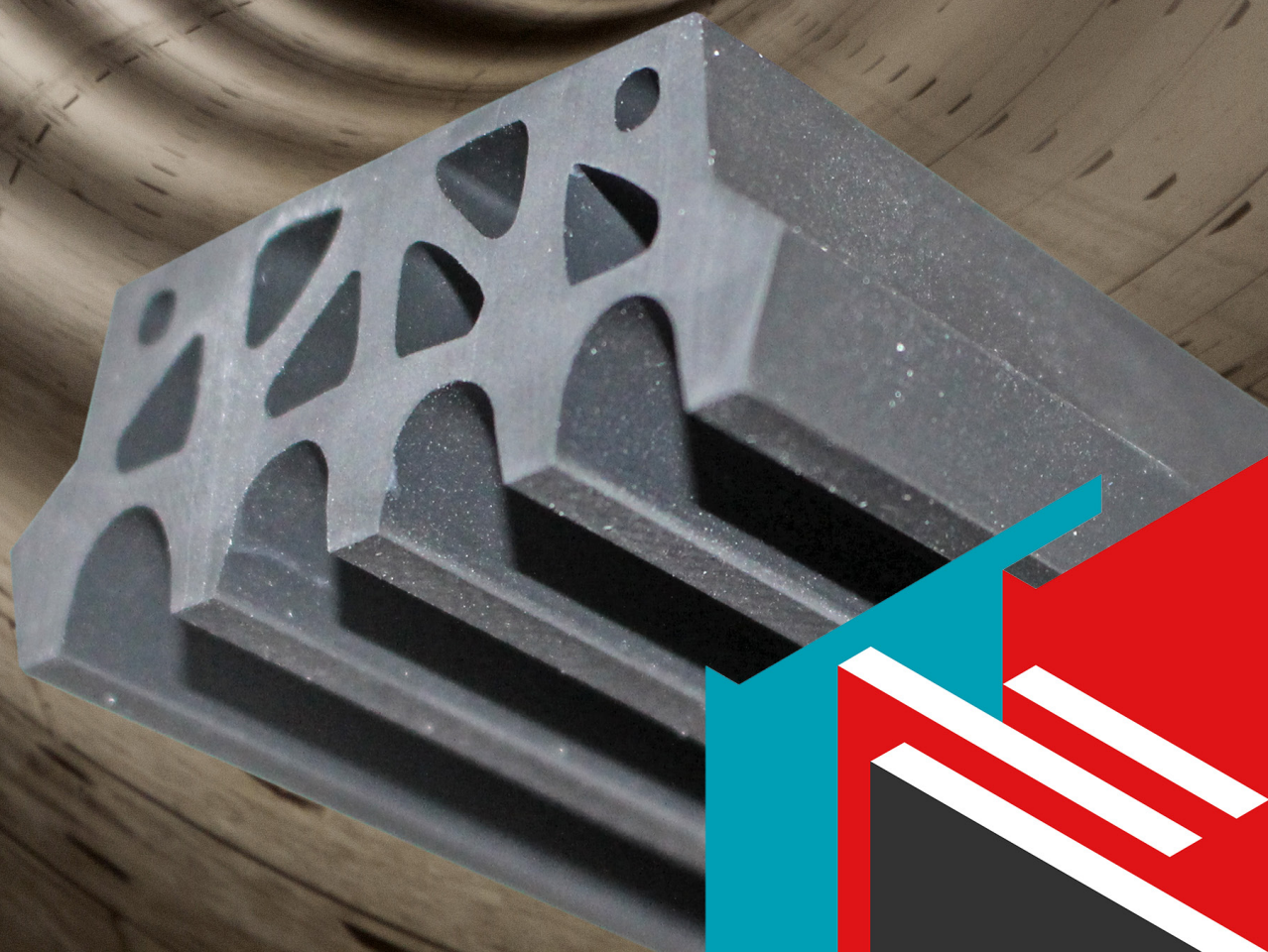
NO MATTER WHAT
THE FUTURE HOLDS



DATWYLER

Tunneling Newsletter

III. Quarter
2016



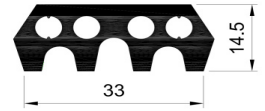
LATEST PROJECTS

Moscow Metro (Solntsevo) / RU



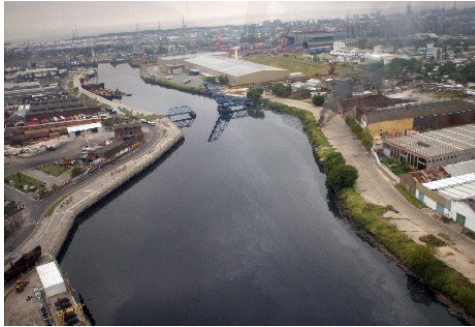
Builder:
Type of gaskets:
Delivery time:

LLC Engineering center Zapchast
glued on / „Lesotho“ M 38544
August 2016 - October 2017



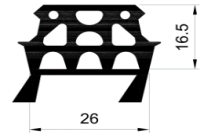
Sets	1.500 sets	Segment thickness	300 mm
Tunnel length	7.000 m	Segment width	1.400 mm
Outer diameter	6.000 mm	Number of segments	6+1
Inner diameter	5.400 mm	Groove length	56,67 m

Riachuelo / AR



Builder:
Type of gaskets:
Delivery time:

Ghella SPA
anchored / „Lee Tunnel“ M 38566
November 2016 -February 2018



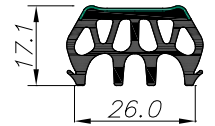
Sets	8.000 sets	Segment thickness	200 mm
Tunnel length	9.600 m	Segment width	1.200 mm
Outer diameter	3.600 mm	Number of segments	5+0
Inner diameter	3.200 mm	Groove length	33,99 m

Lucknow Metro / IN



Builder:
Type of gaskets:
Delivery time:

Gulermak - Tata Projects Ltd JV
coext. glued on / M 74008
July 2016 - June 2017



Sets	2.649 sets	Segment thickness	275 mm
Tunnel length	3.709 m	Segment width	1.400 mm
Outer diameter	6.350 mm	Number of segments	5+1
Inner diameter	5.800 mm	Groove length	56,07 m

FINISHED PROJECTS

Tuen Mun / HK

- 4.120 sets of glued on gaskets were delivered
- 23 containers were shipped
- delivery time 22 months
- Opening in 2018



LA Regional Connector / US

- 2.205 sets of double gaskets were delivered
- 8 containers were shipped
- delivery time 11 months
- Opening in 2021



REFERENCES

Month / Year	Project	Outside Tunnel-diameter	Month / Year	Project	Outside Tunnel-diameter
09/2016	Lucknow Metro / IN	6.350 mm	06/2016	Baikal Tunnel / RU	9.070 mm
08/2016	Kerman Water Tunnel / IR	4.980 mm	05/2016	Ohio Canal Interceptor Tunnel/ US	8.940 mm
08/2016	Riachuelo / AR	3.600 mm	05/2016	Northern Line Extension / UK	5.700 mm
07/2016	Metro Moscow (Solntsevo) / RU	6.000 mm	04/2016	Gallerie du Bassin d'Ukkelbeek/ BE	5.160 mm
07/2016	River Supply Conduit Reach / US	3.130 mm	04/2016	Metro Quito Line 1 / EC	9.070 mm